



MONTHLY MEMBERSHIP PROGRESS REPORT

District 25 G

Results as of: 06/30/2019

GMT: STEVE ANTON

LOCATION INDIANA

GMT CA

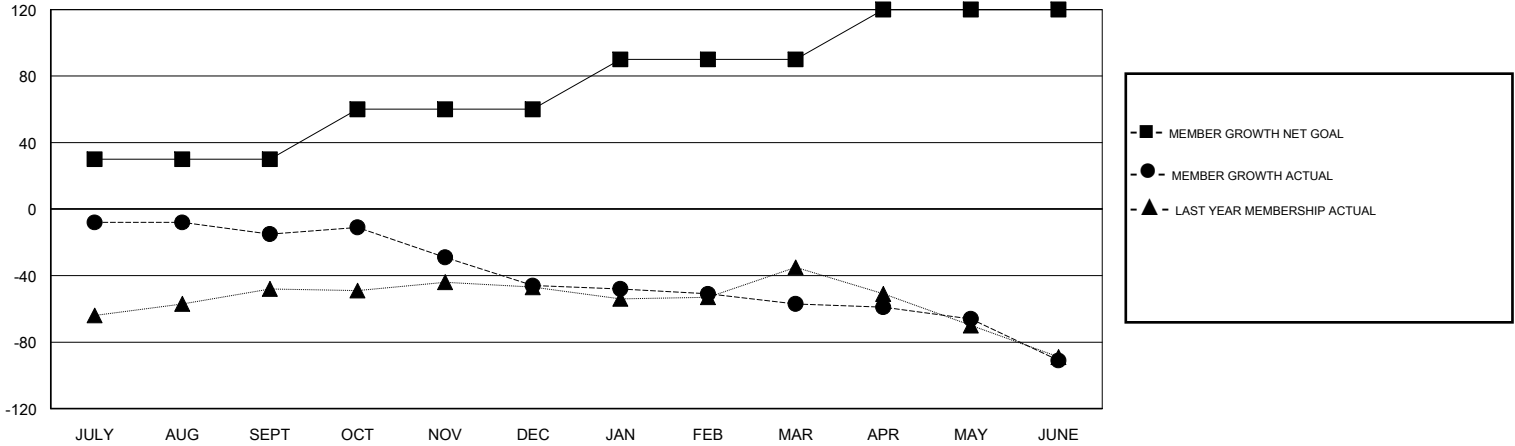
Clubs			
RESULTS FOR 2018-2019			
QUARTER	NEW CLUB GOAL	NEW CLUBS	DROPPED CLUBS
JULY/AUG/SEPT	1	0	0
OCT/NOV/DEC	1	0	0
JAN/FEB/MAR	1	0	0
APR/MAY/JUNE	1	0	0

Members			
RESULTS FOR 2018-2019			
QUARTER	MEMBER GROWTH NET GOAL	MEMBER GROWTH ACTUAL	DROPPED MEMBERS ACTUAL (including transfers)
JULY/AUG/SEPT	30	16	28
OCT/NOV/DEC	30	24	52
JAN/FEB/MAR	30	12	17
APR/MAY/JUNE	30	33	59

GOALS AND ACTUAL NEW CLUBS CUMULATIVE



GOALS AND ACTUAL MEMBERS CUMULATIVE



DROPPED CLUBS: 0	26 CLUBS OF 51 ADDED 1 OR MORE NEW MEMBERS	<u>GENDER DISTRIBUTION</u>
DROPPED MEMBERS	CLICK HERE FOR CUMULATIVE MEMBERSHIP DATA	MALE 966 (70.20%)
DECEASED 27		FEMALE 410 (29.80%)
CLUB CANCELLED 0		Women Percentage Fiscal Year Goal: 20%
OTHER 129		TOTAL FAMILY UNIT MEMBERS 316
TOTAL 156		FAMILY MEMBERS PAYING HALF DUES 160